

# MAJOR DEPRESSIVE DISORDER

PHASE 2 CLINICAL TRIAL



## WHAT IS MAJOR DEPRESSIVE DISORDER?

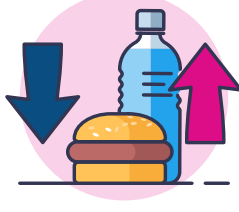
Major Depressive Disorder (MDD) is a common subtype of depression with mild to severe forms characterized by<sup>1</sup>:



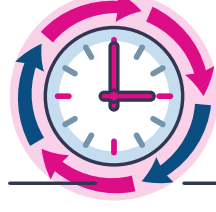
Recurrent episodes of profound sadness



Loss of interest or pleasure



Changes in appetite or weight



Sleep disturbances



Fatigue



Feelings of worthlessness or guilt



Difficulty concentrating or making decisions



MDD occurs as episodes that can often repeat and last for many months or years. These episodes can significantly impact one's ability to engage with life and daily functioning.<sup>1</sup>

APPROXIMATELY **21 MILLION (8.3%) ADULTS** IN THE US HAVE HAD **AT LEAST ONE DEPRESSIVE EPISODE**.<sup>2</sup>

## THE NEED FOR NEW TREATMENT OPTIONS

Despite the various currently available treatment options, many people with MDD struggle to find relief from their symptoms.

People commonly experience intolerable side effects from current medications, which can result in incomplete treatment or worsening symptoms of MDD.<sup>3</sup>



Currently available treatments for MDD often fail patients because they are limited by adverse events and low efficacy.<sup>4,5</sup>



Up to one-third of patients are thought to not benefit from the available medication options and one-third of patients find that a treatment that is initially effective stops working after a period of time.<sup>4,5</sup>

## CLINICAL TRIAL OVERVIEW

Biohaven's MDD Phase 2 Clinical Trial is a randomized, placebo controlled clinical study to evaluate the safety and efficacy of BHV-7000 in MDD.

BHV-7000 is an experimental medication designed to activate specific potassium channels that can reduce hyperactivity and balance the overall electrical activity of the brain.

### 5-28 DAYS

There is a screening period, which can last from five to 28 days.

### 6 WEEKS

Participants will take BHV-7000 or placebo once daily for six weeks.

### 2 WEEKS

There is a 2-week safety follow up after the 6-week study.

### 1 YEAR

After completing the double-blind study, there is an opportunity to receive BHV-7000 for one year as part of a separate clinical study.

## PATIENT ENROLLMENT CRITERIA

Between the ages of 18 to 75

Have between a Body Mass Index (BMI) of 18 and 35 kg/m<sup>2</sup>

Be experiencing a depressive episode

Be willing to discontinue all other medications used to treat depression before entering the study

FOR MORE INFORMATION VISIT **BIOHAVENCLINICALTRIALS.COM**.

1. Cleveland Clinic. Clinical Depression (Major Depressive Disorder). Available at <https://my.clevelandclinic.org/health/diseases/24481-clinical-depression-major-depressive-disorder>. Accessed June 12, 2024.  
2. National Institute of Mental Health. Major Depression. Available at <https://www.nimh.nih.gov/health/statistics/major-depression>. Accessed June 12, 2024.  
3. Kelly K, Posternak M, Jonathan AE. Toward achieving optimal response: understanding and managing antidepressant side effects: Dialogues Clin Neurosci. 2008 Dec; 10(4): 409-418.  
4. Voineskos D, Daskalakis Z, Blumberger DM. Management of Treatment-Resistant Depression: Challenges and Strategies: Neuropsychiatr Dis Treat. 2020; 16: 221-234.  
5. Johns Hopkins Medicine. Health. Why Aren't My Antidepressants Working? Available at: <https://www.hopkinsmedicine.org/health/wellness-and-prevention/why-arent-my-antidepressants-working#:~:text=If%20you%20feel%20like%20your,antidepressants%20%E2%80%94%20it's%20called%20breakthrough%20depression>. Accessed June 28, 2024.